

PRELIMINARY

PM75RLA060

FLAT-BASE TYPE
INSULATED PACKAGE

Notice : This is not a final specification. Some parametric limits are subject to change.

PM75RLA060

Pre.	T.Marumo	Rev.	A
Apr.	M.Yamamoto July.5.2002		<i>T. Marumo</i> <i>M. Tabeta 12-Dec-'02</i>

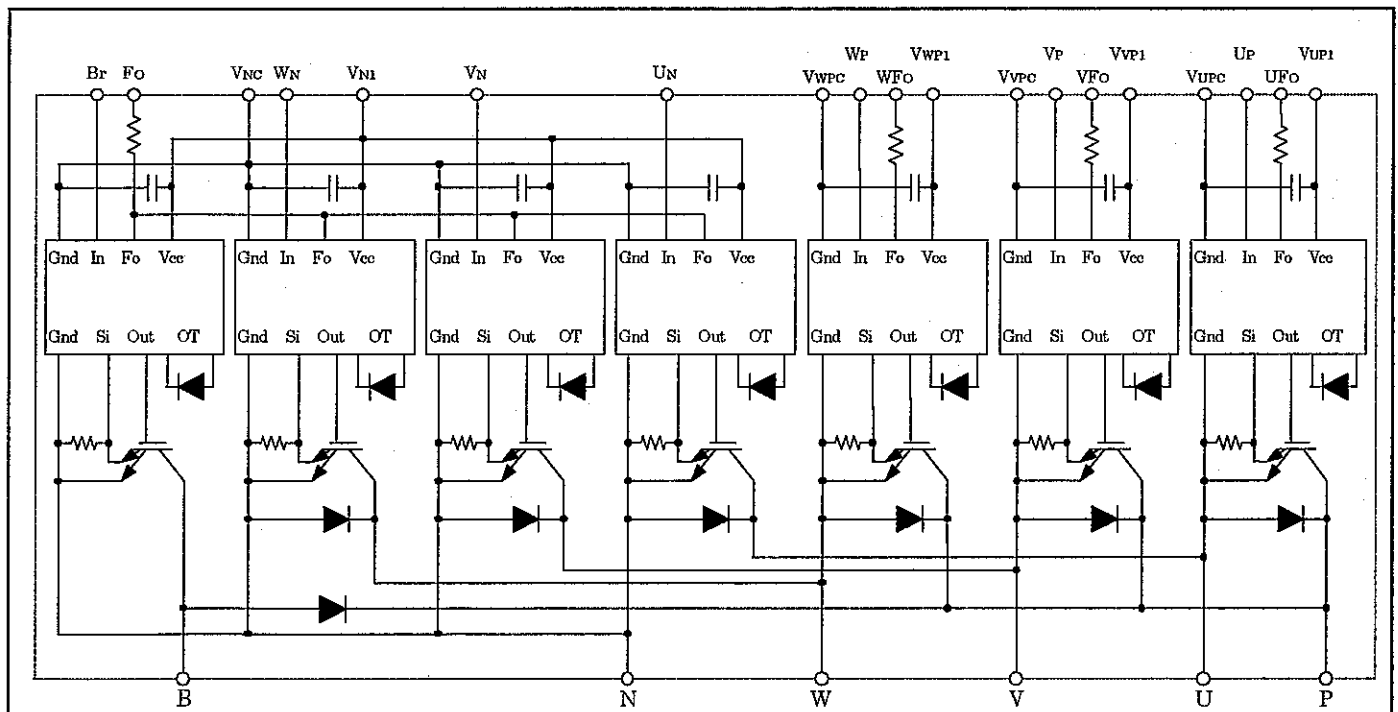
Feature

- a) Adopting new 5th generation IGBT(CSTBT) chip, which performance is improved by 1 μ m fine rule process.
For example, typical $V_{ce(sat)}=1.5V$ @ $T_j=125^{\circ}C$
 - b) I adopt the over-temperature conservation by T_j detection of CSTBT chip, and error output is possible from all each conservation upper and lower arm of IPM.
 - c) New small package
Reduce the package size by 10%, thickness by 22% from S-DASH series.
 - d) Current rating of brake part increased.
67% for the current rating of inverter part.
- 3 ϕ 75A, 600V Current-sense IGBT type inverter
 - 50A, 600V Current-sense regenerative brake IGBT
 - Monolithic gate drive & protection logic
 - Detection, protection & status indication circuits for, short-circuit, over-temperature & under-voltage (P-Fo available from upper arm devices)
 - Acoustic noise-less 5.5kW/7.5kW class inverter application

OUTLINE DRAWING Dimensions in mm

See Page 7

APPLICATION : General purpose inverter, servo drives and other motor controls



Maximum Ratings (T_j = 25°C , unless otherwise noted)

Inverter Part

Item	Symbol	Condition	Ratings	Unit
Collector-Emitter Voltage	V _{CES}	V _D = 15V, V _{CIN} = 15V	600	V
Collector Current	±I _C	T _C = 25°C	75	A
Collector Current (Peak)	±I _{CP}	T _C = 25°C	150	A
Collector Dissipation	P _C	T _C = 25°C (Note-1)	297	W
Junction Temperature	T _j		-20 ~ +150	°C

Brake Part

Item	Symbol	Condition	Ratings	Unit
Collector Emitter Voltage	V _{CES}	V _D = 15V, V _{CIN} = 15V	600	V
Collector Current	I _C	T _C = 25°C	50	A
Collector Current (Peak)	I _{CP}	T _C = 25°C	100	A
Collector Dissipation	P _C	T _C = 25°C (Note-1)	228	W
FWDi Rated DC Reverse Voltage	V _{R(DC)}	T _C = 25°C	600	V
FWDi Forward Current	I _F	T _C = 25°C	50	A
Junction Temperature	T _j		-20 ~ +150	°C

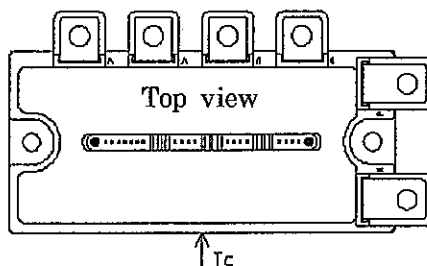
Control Part

Item	Symbol	Condition	Rating	Unit
Supply Voltage	V _D	Applied between : V _{UP1} -V _{UPC} V _{VP1} -V _{VPc} , V _{WP1} -V _{WPC} , V _{UN1} -V _{VNC}	20	V
Input Voltage	V _{CIN}	Applied between : U _P -V _{UPC} , V _P -V _{VPc} W _P -V _{WPC} , U _N -V _{VNC} , W _N -V _{VNC}	20	V
Fault Output Supply Voltage	V _{FO}	Applied between : U _{FO} -V _{UPC} , V _{FO} -V _{VPc} W _{FO} -V _{WPC} , F _O -V _{VNC}	20	V
Fault Output Current	I _{FO}	Sink current at U _{FO} , V _{FO} , W _{FO} , F _O terminals	20	mA

Total System

Item	Symbol	Condition	Rating	Unit
Supply Voltage Protected by SC	V _{CC(prot)}	V _D = 13.5~16.5V Inverter Part, T _j = +125°C Start	400	V
Supply Voltage (Surge)	V _{CC(surge)}	Applied between : P-N , Surge value	550	V
Module Case Operating Temperature	T _C	(Note-1)	-20 ~ +100	°C
Storage Temperature	T _{stg}		-40 ~ +125	°C
Isolation Voltage	Viso	60Hz, Sinusoidal Charged part to Base, AC 1 min.	2500	V _{rms}

(Note-1) T_C(base plate) measurement point is below.



PM75RLA060

FLAT-BASE TYPE
INSULATED PACKAGE

Thermal Resistances

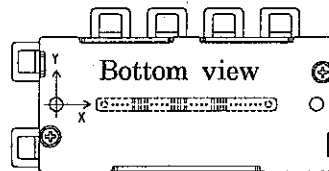
Item	Symbol	Condition	Min.	Typ.	Max.	Unit
Junction to case Thermal Resistances	$R_{th(j-c)Q}$	Inverter IGBT part (per 1/6) (Note-2)	—	—	0.32*	°C/W
	$R_{th(j-c)F}$	Inverter FWDi part (per 1/6) (Note-2)	—	—	0.53*	
	$R_{th(j-c)Q}$	Brake IGBT part (Note-2)	—	—	0.42*	
	$R_{th(j-c)F}$	Brake FWDi part (Note-2)	—	—	0.71*	
	$R_{th(j-c)Q}$	Inverter IGBT part (per 1/6) (Note-1)	—	—	0.42	
	$R_{th(j-c)F}$	Inverter FWDi part (per 1/6) (Note-1)	—	—	0.69	
	$R_{th(j-c)Q}$	Brake IGBT part (Note-1)	—	—	0.55	
	$R_{th(j-c)F}$	Brake FWDi part (Note-1)	—	—	0.92	
Contact Thermal Resistance	$R_{th(c-f)}$	Case to fin, (per 1 module) Thermal grease applied (Note-1)	—	—	0.088	

* If you use this value, $R_{th(f-a)}$ should be measured just under the chips.

(Note-2) T_c (under the chip) measurement point is below.

(unit : mm)

arm axis	UP		VP		WP		UN		VN		WN		Br	
	IGBT	FWDi	IGBT	FWDi	IGBT	FWDi	IGBT	FWDi	IGBT	FWDi	IGBT	FWDi	IGBT	FWDi
X	28.7	28.7	65.2	65.2	85.3	85.3	38.0	38.0	55.4	55.4	75.5	75.5	19.0	23.0
Y	-6.6	0.8	-6.6	2.5	-6.6	2.5	4.6	-4.5	4.6	-4.5	4.6	-4.5	-7.3	6.6



Electrical Characteristics ($T_j = 25^\circ\text{C}$ unless otherwise noted)

Inverter Part

Item	Symbol	Condition	Min.	Typ.	Max.	Unit	
Collector-Emitter Saturation Voltage	$V_{CE(sat)}$	$V_D = 15\text{V}, V_{CIN} = 0\text{V}$ $I_C = 75\text{A}, \text{ Pulsed Fig.1}$	$T_j = 25^\circ\text{C}$	—	1.6	2.1	V
			$T_j = 125^\circ\text{C}$	—	1.5	2.0	
FWDi Forward Voltage	V_{EC}	$-I_C = 75\text{A}, V_{CIN} = 15\text{V}$ $V_D = 15\text{V}$ Fig.2	—	2.2	3.3	V	
Switching Time	t_{on}	$V_D = 15\text{V}, V_{CIN} = 0\text{V} \leftrightarrow 15\text{V}$ $V_{CC} = 300\text{V}, I_C = 75\text{A}$ $T_j = 125^\circ\text{C}, \text{ Inductive Load}$ Fig.3	—	0.5	1.0	μs	
	t_{rr}		—	0.2	0.4		
	$t_{c(on)}$		—	0.4	1.0		
	t_{off}		—	1.2	2.5		
	$t_{c(off)}$		—	0.5	1.0		
Collector-Emitter Cutoff Current	I_{CES}	$V_{CE} = V_{CES}$ $V_D = 15\text{V}$ Fig.4	$T_j = 25^\circ\text{C}$	—	—	1	mA
			$T_j = 125^\circ\text{C}$	—	—	10	

Brake Part

Item	Symbol	Condition	Min.	Typ.	Max.	Unit	
Collector-Emitter Saturation Voltage	$V_{CE(sat)}$	$V_D = 15\text{V}, V_{CIN} = 0\text{V}$ $I_C = 50\text{A}, \text{ Pulsed Fig.1}$	$T_j = 25^\circ\text{C}$	—	1.6	2.1	V
			$T_j = 125^\circ\text{C}$	—	1.5	2.0	
FWDi Forward Voltage	V_{FM}	$I_F = 50\text{A}$ Fig.2	—	2.2	3.3	V	
Collector-Emitter Cutoff Current	I_{CES}	$V_{CE} = V_{CES}$ $V_D = 15\text{V}$ Fig.4	$T_j = 25^\circ\text{C}$	—	—	1	mA
			$T_j = 125^\circ\text{C}$	—	—	10	

Control Part

Item	Symbol	Condition	Min.	Typ.	Max.	Unit	
Circuit Current	I_D	$V_D = 15V$	—	20	30	mA	
		$V_{CIN} = 15V$	—	5	10		
Input ON Threshold Voltage	$V_{th(ON)}$	Applied between : $U_P \cdot V_{UPC}$, $V_P \cdot V_{VPC}$	1.2	1.5	1.8	V	
Input OFF Threshold Voltage	$V_{th(OFF)}$	$W_P \cdot V_{WPC}$, $U_N \cdot V_N \cdot W_N \cdot B_r \cdot V_{NC}$	1.7	2.0	2.3		
Short Circuit Trip Level	SC	$-20 \leq T_j \leq 125^\circ C$	Inverter part	150	—	—	A
		$V_D = 15V$ Fig.5,6	Brake part	100	—	—	
Short Circuit Current Delay Time	$t_{off(SC)}$	$V_D = 15V$ Fig.5,6	—	10	—	μs	
Over Temperature Protection	OT	Detect T_j of IGBT chip	Trip level	135	145	155	$^\circ C$
	OTr		Reset level	—	125	—	
Supply Circuit Under Voltage Protection	UV	$-20 \leq T_j \leq 125^\circ C$	Trip level	11.5	12.0	12.5	V
	UVr		Reset level	—	12.5	—	
Fault Output Current	$I_{FO(H)}$	$V_D = 15V, V_{CIN} = 15V$	—	—	0.01	mA	
	$I_{FO(L)}$		(Note-2)	—	10		15
Minimum Fault Output Pulse Width	t_{FO}	$V_D = 15V$ (Note-2)	1.0	1.8	—	ms	

(Note-2) Fault output is given only when the internal SC, OT & UV protections schemes of either upper or lower arm device operate to protect it.

Mechanical Ratings and characteristics

Item	Symbol	Condition	Min.	Typ.	Max.	Unit
Mounting torque	—	Main terminal screw : M 5	2.5	3.0	3.5	N · m
Mounting torque	—	Mounting part screw : M 5	2.5	3.0	3.5	N · m
Weight	—	—	—	380	—	g

Recommended Conditions For Use

Item	Symbol	Condition	Recommended value	Unit
Supply Voltage	V_{CC}	Applied across P-N terminals	≤ 400	V
Control Supply Voltage	V_D	Applied between : $V_{UP1} \cdot V_{UPC}$ $V_{VP1} \cdot V_{VPC}$, $V_{WP1} \cdot V_{WPC}$, $V_{N1} \cdot V_{NC}$ (Note-3)	15.0 ± 1.5	V
Input ON Voltage	$V_{CIN(ON)}$	Applied between : $U_P \cdot V_{UPC}$, $V_P \cdot V_{VPC}$ $W_P \cdot V_{WPC}$, $U_N \cdot V_N \cdot W_N \cdot B_r \cdot V_{NC}$	≤ 0.8	V
Input OFF Voltage	$V_{CIN(OFF)}$		≥ 9.0	
PWM Input Frequency	f_{PWM}	Using Application Circuit of Fig.8	≤ 20	kHz
Arm Shoot-through Blocking Time	t_{dead}	For IPM's each input signals Fig.7	≥ 2.0	μs

(Note-3) With ripple satisfying the following conditions
 dv/dt swing $\leq \pm 5V/\mu s$, Variation $\leq 2V$ peak to peak

Precautions for testing

- Before applying any control supply voltage (V_D), the input terminals should be pulled up by resistors, etc. to their corresponding supply voltage and each input signal should be kept off state. After this, the specified ON and OFF level setting for each input signal should be done.
- When performing "SC" tests, the turn-off surge voltage spike at the corresponding protection operation should not be allowed to rise above V_{CES} rating of the device.
(These test should not be done by using a curve tracer or its equivalent.)

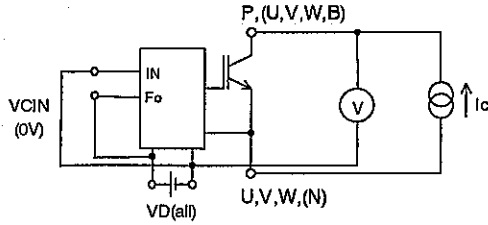


Fig.1 $V_{CE(sat)}$ Tset

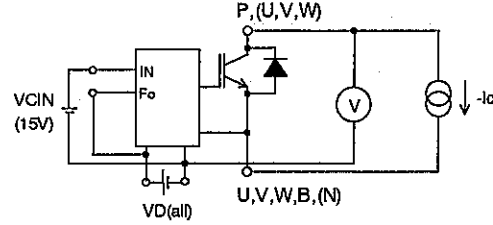


Fig.2 $V_{EC}, (V_{FM})$ Tset

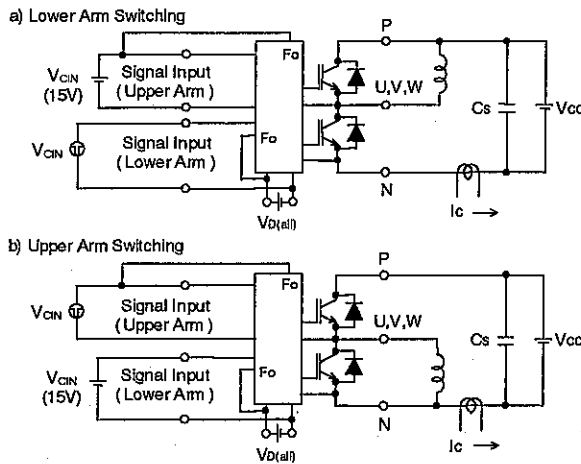


Fig.3 Switching time test circuit and waveform

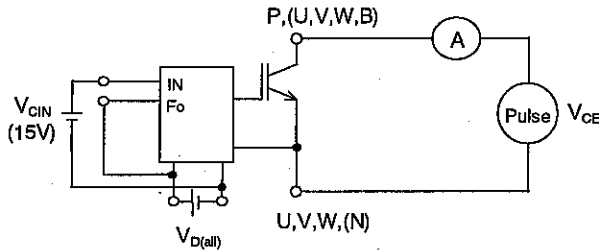


Fig4 ICES Test

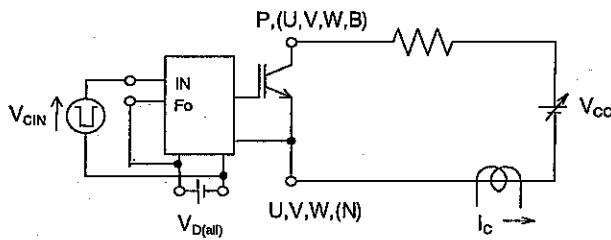


Fig.5 SC Test

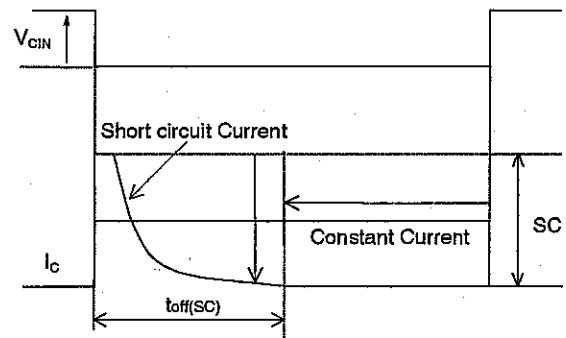
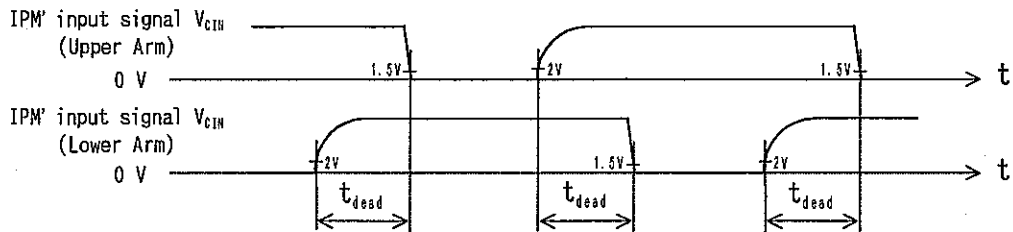


Fig.6 SC Test waveform



1.5V: Input on threshold voltage $V_{th(on)}$ typical value, 2V: Input off threshold voltage $V_{th(off)}$ typical value

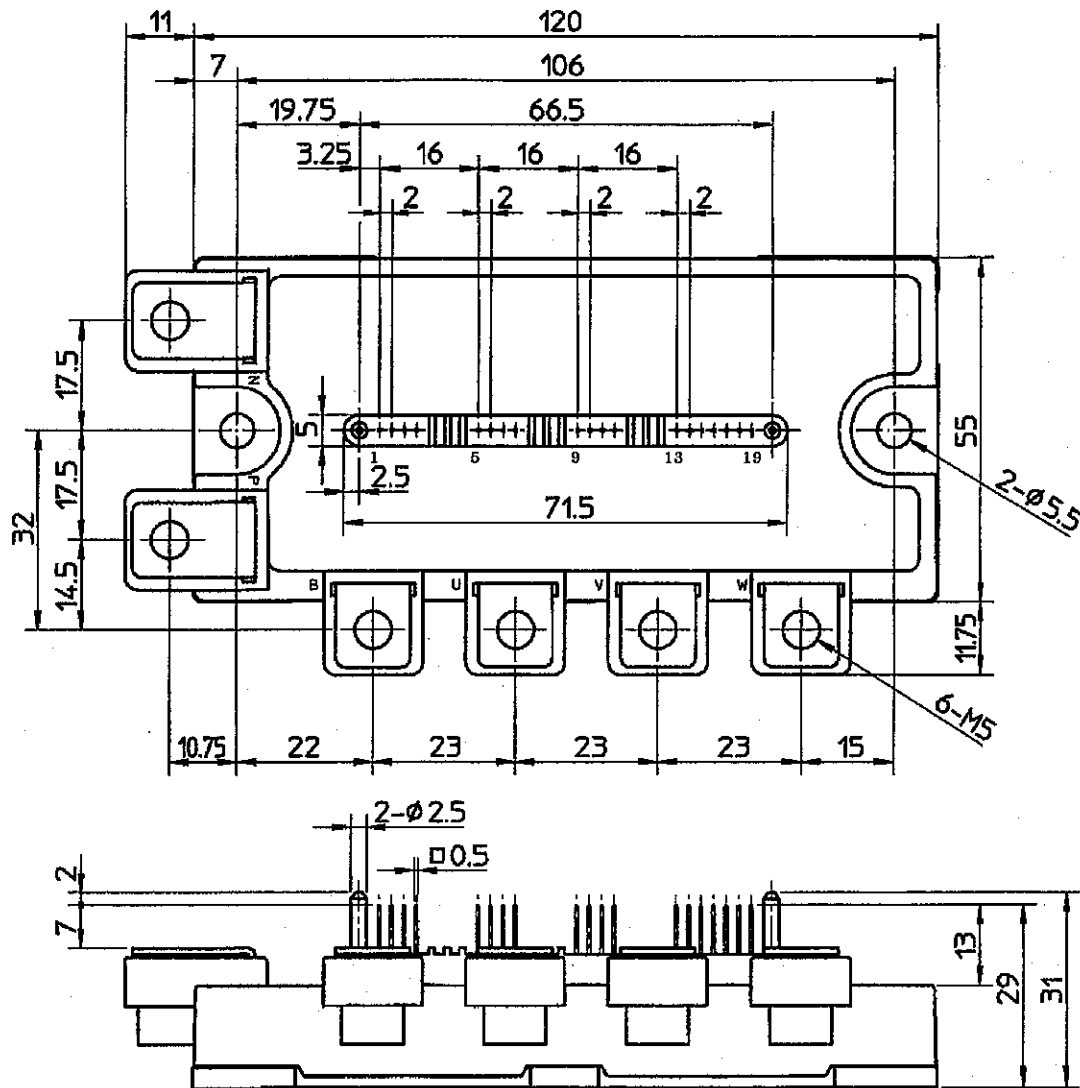
Fig.7 Dead time measurement point example

PM75RLA060

FLAT-BASE TYPE
INSULATED PACKAGE

Outline drawings

[Dimensions in mm]



Terminal code

1. VUPC	6. VFO	11. WP	16. UN
2. UFO	7. VP	12. VWP1	17. VN
3. UP	8. VVP1	13. VNC	18. WN
4. VUP1	9. VWPC	14. VN1	19. Fo
5. VVPC	10. WFO	15. Br	